

Resetting a Student assignment in Pathways

Step 1: Log into PLATO

Step 2: Choose the User Management Button

Step 3: Choose Your Student

Step 4: Click the Performance Button

Step 5: Find the Assignment you would like to reset

The image shows three sequential screenshots of the PLATO Pathways Administration software interface, illustrating the steps to reset a student assignment.

Top Screenshot: Main Dashboard
The main dashboard displays several management options: User Management, Report Management, Class Management, System Management, and Learning Resource Management. A red arrow points to the User Management button.

Middle Screenshot: User Management
The 'User Management' window shows a list of current users. A red arrow points to the user 'Mickey Mouse' in the list.

Bottom Screenshot: Performance
The 'Performance' window for Mickey Mouse is shown. A list of activities is displayed on the left, with 'Algebra 1 Test' highlighted by a red arrow. On the right, performance data is shown, including Start Date, Last Access, Total Time (0:00:00), and Number Of Tries (0). The Completion Status is 'Not Started', and the Mastered status is 'No'. At the bottom, there are buttons for 'Change', 'Performance History', 'OK', and 'Help'.

Step 6: Open the assignment to the lesson that needs to be reset



Performance

Activities:

- Algebra 1 Test
- Beginning Reading D - Help Out
- Family Time
- Around Town
- Person to Person
- P.S. 142 - Help at School**
- New School Blues
- Equipment
- Lunch Buddies
- Fact or Opinion?
- Four-legged Friends
- Grammar with Assessment
- Math Expeditions A with Skills Inventory
- Math Fundamentals Sequenced

Performance Data:

Start Date : 2/12/2007
Last Access : 2/12/2007
Total Time : 0:00:00
Number Of Tries : 1

Completion Status : Not Completed

Mastered : No

Score : 0

Locked : No

Exempt : No

Change

View

Assignment Activities with Performance Data Performance History

OK Help

Step 7: Click Change

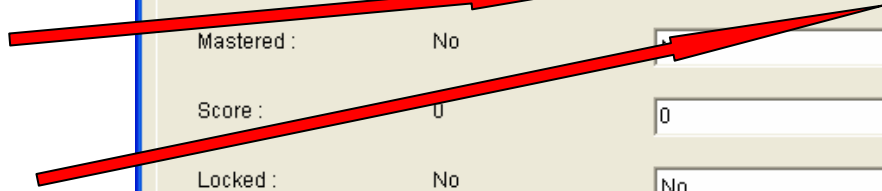


Edit Performance - P.S. 142 - Help at School

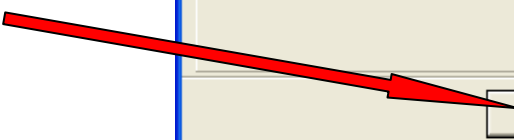
Performance Data:	Current Setting:	New Setting:
Completion Status:	Not Completed	Not Started
Mastered :	No	Yes
Score :	0	0
Locked :	No	No
Exempt :	No	No

OK Cancel Help

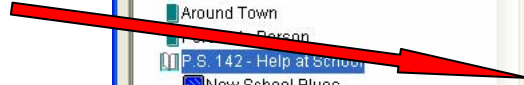
Step 8: Choose the areas you want to change and go to the drop down arrow to change the settings



Step 9: Click Okay



Step 10: It will now show the changes you made on the right side



Performance

Activities:

- Algebra 1 Test
- Beginning Reading D - Help Out
- Family Time
- Around Town
- Person to Person
- P.S. 142 - Help at School**
- New School Blues
- Equipment
- Lunch Buddies
- Fact or Opinion?
- Four-legged Friends
- Grammar with Assessment
- Math Expeditions A with Skills Inventory
- Math Fundamentals Sequenced

Performance Data:

Start Date : 2/12/2007
Last Access : 5/17/2007
Total Time : 0:00:00
Number Of Tries : 0

Completion Status : Not Started

Mastered : No

Score : 0

Locked : No

Exempt : No

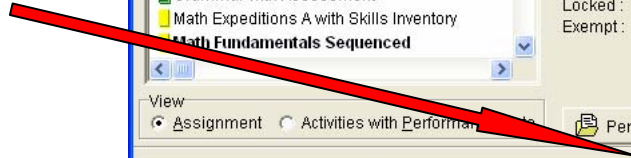
Change

View

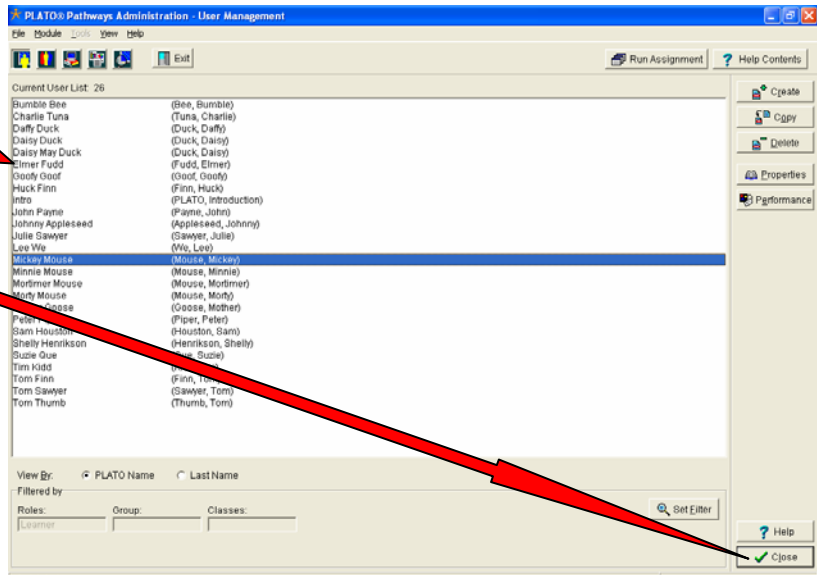
Assignment Activities with Performance Data Performance History

OK Help

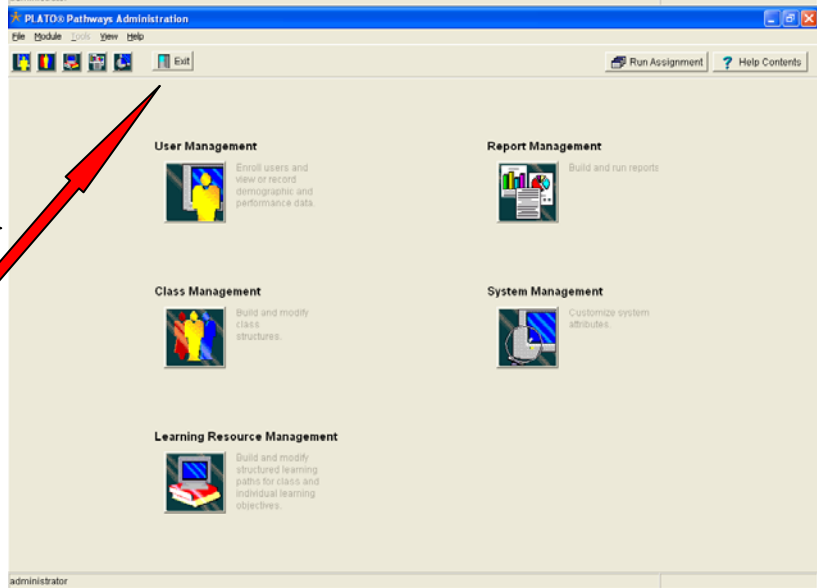
Step 11: Click Okay



Step 12: Choose another student and start the process over or click close



Step 13: If you choose close, you will be back on the main page



Step 14: Log out properly