

■ Installing Courseware Plug-ins for Windows® Workstations

- ▶ These instructions will help you install and configure the necessary software required to run PLATO® courseware over the Internet for your Windows workstations.

Note:

We recommend that instructors or lab managers with administrator privileges perform the plug-in downloads on each workstation prior to first student use. Doing so will enable learners to quickly log on, access courseware and begin learning.

- 1) Log on to the workstation as a user with administrative rights.

If you do not download and install plug-ins while logged on to the workstation with administrator privileges, the process will appear to be successful; however, errors will occur when your learners try to launch courseware.

Fig. 2.1



- ▶ **Macromedia® Flash® Player**

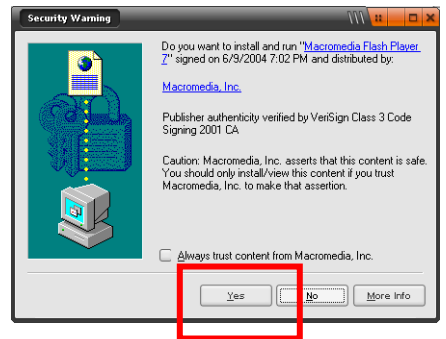
- 2) Open the web browser and go to <http://www.platoweb.com>
 - a) If you do not have Macromedia Flash Player installed, you will see a message prompting you to install it. Click the “Get Macromedia Flash Player” button (Fig 2.1). Otherwise, proceed to step 3.

Fig. 2.2



- b) To install Flash Player, click the Install Now button (Fig 2.2) on the page that the link opens.

Fig. 2.3



- c) You will receive a Security Warning window; click “Yes” to begin the installation (Fig 2.3).

- d) You will see an animated graphic when the installation is complete (Fig 2.4).

Fig. 2.4



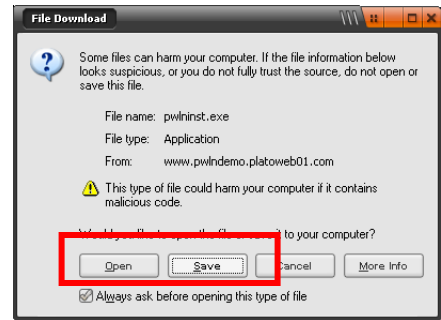
(continued on the next page)

PLATO Plug-ins

3) [Click here to download the "PLATO Web Learning Network Clients" plug-ins.](#)

- You will be prompted to Open or Save the file (Fig 3.1).
- Clicking Open will open the file directly and install the PLATO Plug-ins to the workstation.
- Clicking Save will allow you to save the file to the local hard drive or a network location. If you choose to save the file to the network, you will need to browse to it from other workstations and double-click it to install the plug-ins. The installation will run automatically and close when it is complete.

Fig. 3.1



Macromedia® Shockwave® Player

4) [Click here to install Macromedia Shockwave Player Installer](#) plug-ins (requires administrative privileges). Shockwave® is required to run the following courseware:

➤ If you will NOT be using the following courseware, go to step 5

- Basic Skills for the Real World
- Beginning Reading for the Real World (including Skills Inventory)
- Job Skills for the Real World
- Math Expeditions (including Skills Inventory)
- Projects for the Real World
- Reading Explorations

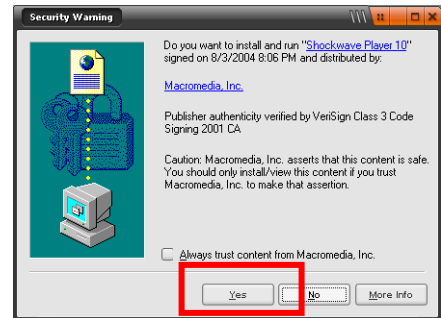
a) Click the Install Now button on the page that the link opens (Fig 4.1).

b) You will receive a Security Warning window; click "Yes" to begin the installation (Fig 4.2).

Fig. 4.1

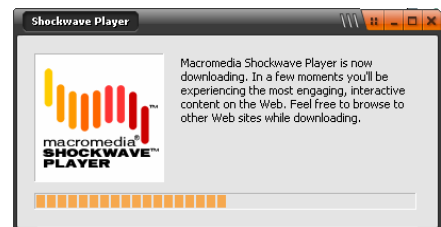


Fig. 4.2



You will see the download window and the files load to your hard drive (Fig 4.3).

Fig. 4.3

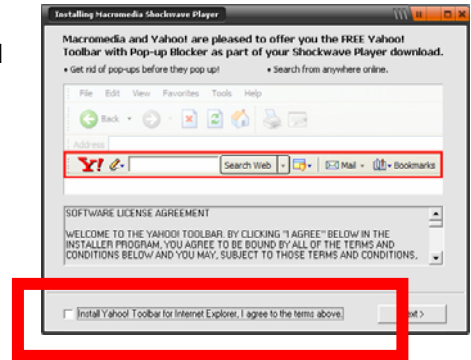


(continued on next page)

(Macromedia Shockwave continued)

- c) **IMPORTANT: UNCHECK** the “Install Yahoo! Toolbar” box. Installing the Yahoo! Toolbar will enable a pop-up blocker that will prevent courseware from running (Fig 4.4).

Fig. 4.4



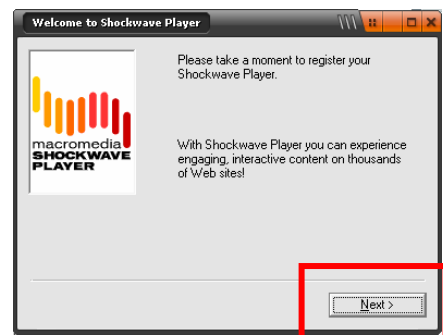
- d) Click Next. All open browsers will close and you will see the installation progress (Fig 4.5).

Fig. 4.5



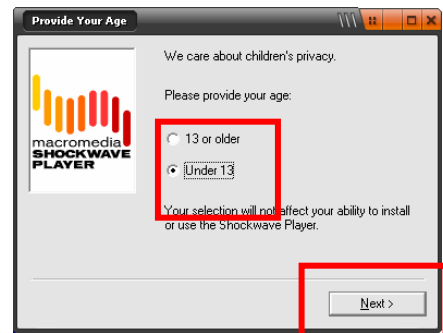
When the installation is complete, your browser will re-open to the Macromedia site and you will be prompted to register Shockwave. Click Next (Fig 4.6).

Fig. 4.6



- e) Select the appropriate age category. Click Next (Fig 4.7).

Fig. 4.7



(continued on next page)

(Macromedia Shockwave continued)

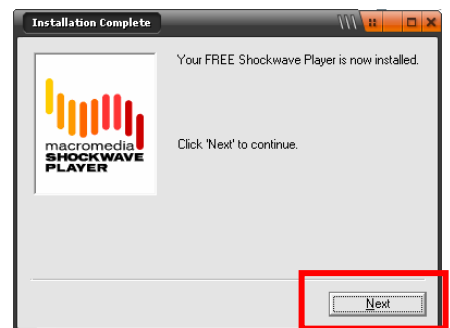
- f) Click Next. All open browsers will close and you will see the installation progress (Fig 4.8).

Fig. 4.8



When the installation is complete, your browser will re-open to the Macromedia site and you will be prompted to register Shockwave. Click Next (Fig 4.9).

Fig. 4.9



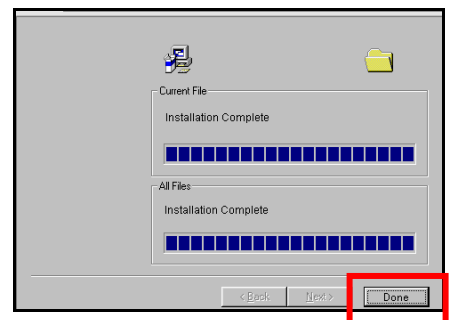
▶ **PLATO Xtras**

- 5) [Click here to install PLATO Xtras.](#)

The installation is automatic. You will be notified when the installation is complete.

- a) Click the "Done" button to close the window (Fig 5.1).

Fig. 5.1



▶ **Macromedia® Authorware® Player**

- 6) To install [Macromedia Authorware Web Player](#) for **Internet Explorer®**, download and install this plug-in. If you have **Netscape®**, download and install this [Macromedia Authorware Web Player](#) plug-in.

➤ If you will NOT be using the PLATO Biology Series and/or PLATO Chemistry Series courseware, go to step 7.

- a) For Authorware, click the Install Now button on the page that the link opens (Fig 6.1).

Fig. 6.1



(continued on the next page)

(Macromedia Authorware continued)

- b) You will receive a Security Warning window; click “Yes” to begin the installation (Fig 6.2)

You will see an animated graphic when the installation is complete (Fig 6.3).

You can close all browser windows.

- 7) Restart the web browser to activate changes.
- 8) Log in to the PLATO Web Learning Network by navigating to <http://www.platoweb.com> and entering your account number.

Fig.6.2

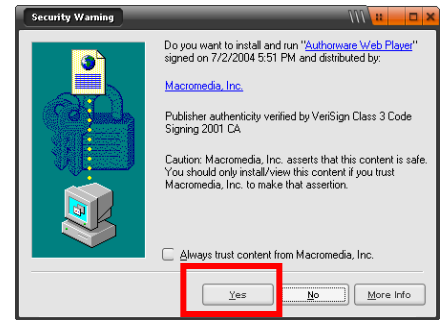
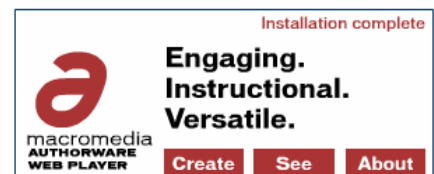


Fig. 6.3



Links referenced in this document

Macromedia Flash Player:

http://www.macromedia.com/shockwave/download/download.cgi?P1_Prod_Version=ShockwaveFlash

PLATO Plug-ins:

http://www.pwln2.platoweb.com/pathways/pway_iis.dll/pwln/02040611/fullexe/pwlninst.exe

Macromedia Shockwave Player:

<http://sdc.shockwave.com/shockwave/download/frameset.fhtml>

PLATO Xtras:

<http://www.pwln2.platoweb.com/wasatch/preload.asp>

Macromedia Authorware Player for Internet Explorer®:

http://www.macromedia.com/shockwave/download/download.cgi?P1_Prod_Version=AWPfull&P2_Platform=Win32&P3_Browser_Version=MSIE&P5_Language=English

Macromedia Authorware Player for Netscape®:

http://www.macromedia.com/shockwave/download/download.cgi?P1_Prod_Version=AWPfull&P2_Platform=Win32&P3_Browser_Version=NetscapePre4&P5_Language=English