



# I-PLN NEWSLETTER

9/22/08

Idaho Web Site: <http://www.plato.com/l-pln.aspx>

## Idaho 2008-09 ISAT Alignments

Changes occur on a regular basis to the Alignments you have on your system. Please check to see if you are updated to the current materials.

ISAT Alignments will have an 08 or 09 at the end of the title. The current spreadsheet and assignment sheets can be found on the Idaho Web Site. <http://www.plato.com/l-pln.aspx>

### Create a New Learning Path

Allows you to create a new learning path using the PLATO Library of Learning Resources.

### PLATO Library of Learning Resources

Displays all PLATO courseware available to you through PLATO Web Learning Network.

### Custom Learning Resources Available To My Account

Displays learning paths created by other Group Coordinators to which you have access.

**Achievement Goals for the ISAT Math Correlation 08** (Properties) (Delete) (Copy) (Export)

**Achievement Goals for the ISAT Reading Correlation 08** (Properties) (Delete) (Copy) (Export)

**Achievement Goals for the ISAT Language Correlation 08** (Properties) (Delete) (Copy) (Export)

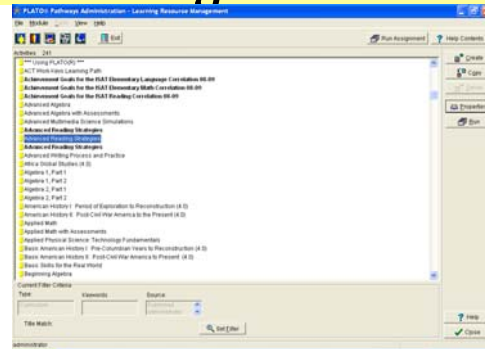
**Achievement Goals for the ISAT Science Correlation 08** (Properties) (Delete) (Copy) (Export)

**Education Websites** (Properties) (Delete) (Copy) (Export)

### My Custom Learning Resources (in progress)

Displays learning paths you created.

The new CH-PWLN ISAT Alignments can be found under the Custom Learning Resources available to My Account in the Learning Resource Tools Tab.



The new Pathways ISAT Alignments can be found under the Learning Resource Management tab by clicking set Filter-Source-then checking the All option. This will allow you to preview the alignments that were just installed.

Updates to the Alternate Graduation materials can also be found on the Idaho website. The models that are available target the different strand areas for each State Standard required for graduation. Please note Language utilizes Standard 3 & 5 with the new alignments.

## IDAHO/PLATO DOCUMENTS

The Idaho Self help guides are available on the Idaho Web Site. These guides were created to walk you through a step by step process on how to utilize your PLATO program effectively. Choose the link on the left side of the screen and search the documents.



<http://www.plato.com/l-pln.aspx>



The PLATO Support site provides self help guides, a knowledge base that will help solve technical issues and Teacher access to thousands of offline activities. To access these activities, you will need your 10 digit PLATO ID number.

<http://support.plato.com>

### I-Pln Contacts:

Dave Lanz

Account Manager

[dlanz@plato.com](mailto:dlanz@plato.com)

Lee Wheeler

Senior Project Manager

[lwheeler@plato.com](mailto:lwheeler@plato.com)

### Special points of interest:

- ISAT Alignments
- Idaho/PLATO Documents
- CHPWLN 5.1 Upgrade
- System Management
- Tech Tips

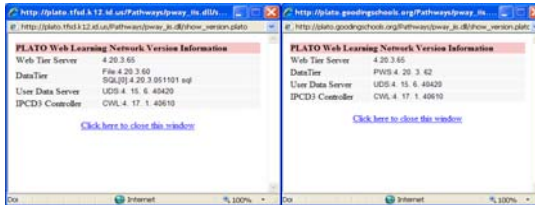




# I-PLN Tech News

## CHPWLN 5.1 UPGRADE

It is now time to request your CHPWLN 5.1 upgrade. This upgrade is for to fix issues with the SQL servers. Please follow this steps to determine if your system is SQL or para-



issues that have arisen to the installing of custom learning paths in a SQL system. Please remember to utilize PLATO Support if you need any assistance with the upgrade.

**v4.20.3-65**  
**Client-Hosted**  
**Build 5.0.5 20071023**  
**PLATO Web Tier Service**  
**Version: 4.20.3.65**

In the lower left hand corner of your CHPWLN login Screen-click on the word version in blue. Your Screen will have SQL for the data tier if you have a CHPWLN SQL System Install. Your paradox

dox: In the lower left hand corner of the data tier. Once you have determined your system, go to <http://support.plato.com>. Click on the downloads & up grades tab to request the 5.1 CHPWLN upgrade. Please allow 2-3 weeks for delivery. This upgrade will fix



## UPGRADES/SYSTEM REQUIREMENTS

### ISAT Learning Paths

<http://www.plato.com/I-PLN/Idaho-ISAT-Materials.aspx>

### Alternate Graduation Learning Paths

<http://www.plato.com/I-PLN/Idaho-Alternate-Graduation.aspx>

### System Requirements

<http://support.plato.com/requirements.asp>

### Upgrade Requests

[http://support.plato.com/downloads\\_upgrades.asp](http://support.plato.com/downloads_upgrades.asp)

### Idaho Web Site Notices

<http://www.plato.com/I-PLN/Idaho-Updates-Notices.aspx>



### Support

Support Knowledge Base

<http://support.plato.com/kb/index.asp>

Contacting Support

<http://support.plato.com/contact/index.asp>

### PLATO Web accounts

### District Set-Up

<http://www.plato.com/I-PLN/Resources.aspx>

### Advantages

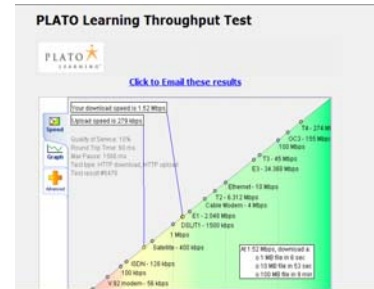
- Updated Courseware/New Assessments
- zero local server maintenance
- Automatic Upgrades



### System Broadband Speed Test

<http://myspeed.platoweb.com>

**Note:** If you do not have a web account, request one today!



## TECH TIPS

### Shockwave a Problem? Try these solutions!

If you are running Windows 98-2000 and it keeps asking to install, run the program through Fire Fox or save install to the desk top.

CH-PWLN patches must be downloaded and executed on each server-then reboot server

PLATO Support needs to be informed if shock wave continues to be an issue

Patches/upgrades: <http://support.plato.com/index.asp>

### CHPWLN Active X

Signs of Active X (Box around words-double clicking on everything-Gold bar at the top of the page.

Install Patches on servers and reboot

### Parent Link to support materials

<http://www.plato.com/I-PLN/Idaho-Parent-Materials.aspx>

### Free File Conversions

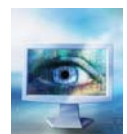
<http://www.zamzar.com>

### Sending Large Files through email

<http://www.yousendit.com/>

### Computers for Kids

<http://www.cfkidaho.org/>



### Red Error Log Message

Please contact Lee and he will have it removed and fixed.