



## Idaho-PLATO Learning Network Update

As the 2008-09 school year draws to a close, we continue to hear from teachers and administrators who have seen significant gains in student ISAT scores. Earlier this year, the Idaho State Department of Education and PLATO worked together to determine the levels of correlations between PLATO curriculum and Idaho Content Standards. The findings (posted at right) and published to the SDE website clearly show why student ISAT scores rise significantly when students spend time learning with PLATO. The I-PLN tools, provided by the Idaho Department of Education, continue to be recognized by teachers and administrators as one of the best in their toolbox.

Grade	Read- ing	Read- ing	LA	LA	Math	Math
	All	ISAT	All	ISAT	All	ISAT
2	90%		82%		89%	
3	81%	88%	89%	93%	79%	96%
4	90%	94%	88%	100%	83%	87%
5	87%	88%	95%	100%	79%	89%
6	95%	100%	95%	100%	87%	87%
7	98%	100%	84%	100%	80%	92%
8	98%	100%	97%	100%	86%	97%
9	82%		98%		90%	
10	91%	91%	98%	98%	87%	87%
11	82%	82%	98%	98%		
12	93%	93%	98%	98%		
Over- all Av.	93%	93%	90%	99%	84%	91%

## PLE AND THE IDAHO TEST PACKS

**The PLATO Learning Environment (PLE) and the Idaho Test Packs with Prescriptions solution is designed to target each learner's areas of need and provide a personalized prescription based on individual item performance. The result is that learners can receive assignments that focus on just their individual needs.**

### Considerations:

- Test packs can be used in the Fall to help learners continue their individual growth for the Spring ISAT's.
- Test Packs are aligned to each Standard Goal Area
- Administer pre-, mid-, and post tests to monitor learner progress throughout the school year.

**Reports:** Use the report to track how individual students and your class as a whole perform on test questions mapped to specific objectives. Then implement strategies such as those listed below to help learners perform better.

- Measure student progress from one testing session to the next.
- As state tests approach, target instruction around objectives that have scores close to what is required to pass.
- Identify areas for which coaching and mentoring opportunities can help enhance your teaching.
- Identify students with common weaknesses for small-group instruction, as well as those students who require individualized instruction.
- Working with other teachers, regroup students to re-teach problematic concepts rather than re-teaching both concepts in a single classroom.

Test Information	Test Design	Prescriptions Summary	Printing Options
Text name and version Grade Subject Number of items and recommended time	Exact standards covered by the test Item count per standard Answer distribution for multiple choice Percentage of grid response or essay items View entire test	List of instructional modules Identifies corresponding test items by module Total number of test items associated by module Minimum correct answers to exempt from a prescription	Offers a link to view printable passages. Is Browser-based.

### I-PLN Contacts:

Dave Lanz

Account Manager

[dlanz@plato.com](mailto:dlanz@plato.com)

Lee Wheeler

Senior Project Manager

[lwheeler@plato.com](mailto:lwheeler@plato.com)

### Special points of interest:

- Correlation Update
- Idaho Test Packs
- I-PLN Spot Light
- Cache Servers
- System Management
- Tech Tips



# Spot Light



Boise School District continues to grow its PLATO implementation K-12. During the 2008-09

school year, the district made a renewed commitment to professional development. Teacher in-service time was provided individually to various schools.

Sixteen schools were given a chance for a University credit; over 300 teachers were trained; and 2500 new students were given the opportunity to increase their academic skills.

PLATO is becoming a great tool for our district to use to supplement and enhance our students' individual needs in the following ways:

Mountain View Elementary and Les Bois Junior High use it as part of their daily tutoring and have seen their schools become proficient in areas they had not succeeded in before.

Many of the schools have after school refresher courses to get their students back into the system and assigned new lessons that will help them continue their individual growth.

The Elementary schools use PLATO for their before and after school ISAT remediation tutoring programs.

The use of PLATO in

many different classrooms has grown to whole group instruction as well as centers, to enhance teacher curriculum materials and build students' skills.

The Junior High Schools have started building ISAT Boost Classes as part of a nine week elective to help students that need remediation in different areas.

Monroe Elementary, 4<sup>th</sup> grade, was introduced to Straight Curve Math and continues to incorporate it into the daily math curriculum.

Mr. Walker from Monroe Elemen-



tary has this to share about Straight Curve Math which he has been utilizing in his 4th Grade classroom:

"I found that using and implementing Straight Curve into my math curriculum was seamless. All of the main concepts that I teach through our state adopted math textbook are incorporated into Straight Curve".

He also added:

"I started each week giving the readiness test and pretest from Straight Curve for that week's focus concepts. The Straight Curve would grade and assign games and lessons specific to each stu-

dent's needs for that particular week's focus. Following the readiness test and pretest, I used the Mini-Lesson and Investigation components of Straight Curve to help teach and model the concepts during our daily note taking sessions. Throughout the remainder of the week my students used class time to complete the games and lessons Straight Curve assigned them following the readiness and pretest. I found that the games were challenging enough for my students to force them to think about their answers instead of mindless "clicking" like some math games allow them to do. My students were very eager to complete their assignments on Straight Curve.

At the end of the week I found that many students grew in their knowledge of the focused concepts."

*The above spotlight was provided by Boise School District. Please let us know if you would like to spotlight success in your district!*

Real learning. Real results.™





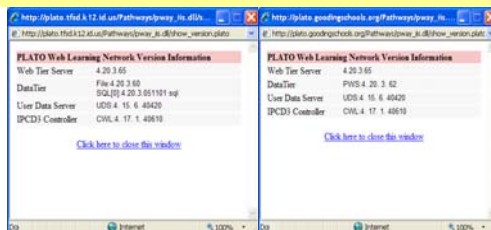
# I-PLN Tech News



## 5.1 CHPWLN UPGRADE

If you have not done so already, it is now time to request your CHPWLN 5.1 upgrade. This upgrade will fix issues with SQL servers. Please follow these steps to determine if your system is SQL or paradox: In the lower left hand corner of your CHPWLN log-in screen, system install will have PWS for the click on the word ver- data tier. sion in blue. Your Screen will have SQL Once you have determined your system, for the data tier if you go to <http://support.plato.com>. Click on have a CHPWLN SQL the downloads & upgrades tab to re- System Install. Your paradox CHPWLN quest the 5.1 CHPWLN upgrade. Please

allow 2-3 weeks for delivery. This upgrade will fix issues regarding the installation of custom learning paths in a SQL system. Please remember to utilize PLATO Support if you need any assistance



**v4.20.3-65**  
 Client-Hosted  
 Build 5.0.5 20071023  
 PLATO Web Tier Service  
 Version: 4.20.3.65



## UPGRADES/SYSTEM REQUIREMENTS

### ISAT Learning Paths

<http://www.plato.com/I-PLN/Idaho-ISAT-Materials.aspx>

### Alternate Graduation Learning Paths

<http://www.plato.com/I-PLN/Idaho-Alternate-Graduation.aspx>

### System Requirements

<http://support.plato.com/requirements.asp>

### Upgrade Requests

[http://support.plato.com/downloads\\_upgrades.asp](http://support.plato.com/downloads_upgrades.asp)

### Idaho Web Site Notices

<http://www.plato.com/I-PLN/Idaho-Updates-Notices.aspx>



### Support

Support Knowledge Base

<http://support.plato.com/kb/index.asp>

Contacting Support

<http://support.plato.com/contact/index.asp>

### PLATO Web accounts

### District Set-Up

<http://www.plato.com/I-PLN/Resources.aspx>

### Advantages

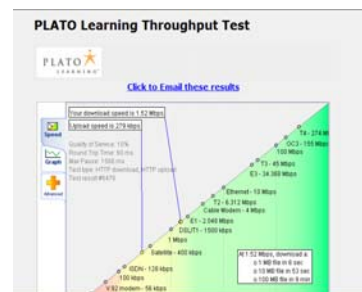
- Updated Courseware/New Assessments
- zero local server maintenance
- Automatic Upgrades



### System Broadband Speed Test

<http://myspeed.platoweb.com>

**Note:** If you do not have a web account, request one today!



## TECH TIPS

### Shockwave a Problem? Try this solution!

If you look in the Window Sys 32 folder you will find an Adobe folder with a limited amount of Xtras related to Shockwave 11. You will also find a separate Macromedia Folder that has Xtras related to earlier versions of Shockwave. Shockwave 11 doesn't access the Macromedia Xtras. The problem is that when you install Shockwave 11 it doesn't uninstall this Macromedia Folder so in the reinstall of the plugins through Plato it doesn't install the Xtras needed in the Adobe folder. If the Macromedia Folder is left the Sys 32, Shockwave 11 doesn't install a new set of Xtras that correlate to 11. So when updating to Shockwave 11, uninstall previous versions of Shockwave through the Add and Remove in the Control Panel and Reinstall Shockwave. This removes the Macromedia Folder and after the reinstall you can reinstall a new set of Xtras which are installed in the Adobe folder located in the Win folder.

### Free File Conversions

<http://www.zamzar.com>

### Sending Large Files through email

<http://www.yousendit.com/>

### Computers for Kids

<http://www.cfkidaho.org/>

### Red Error Log Message

Please contact Lee and he will have it removed

