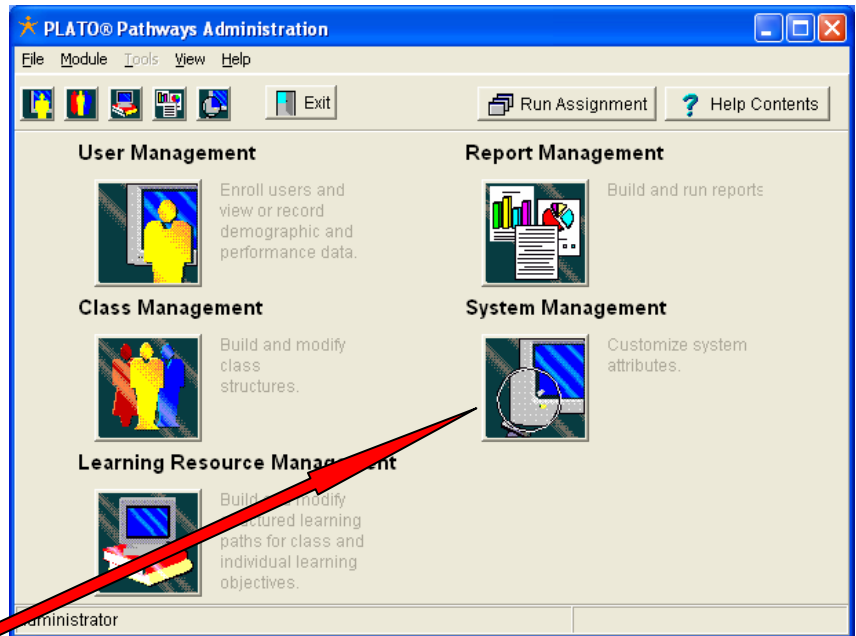


Setting up a Teacher Role in Pathways

Step: # 1
Log into PLATO Pathways

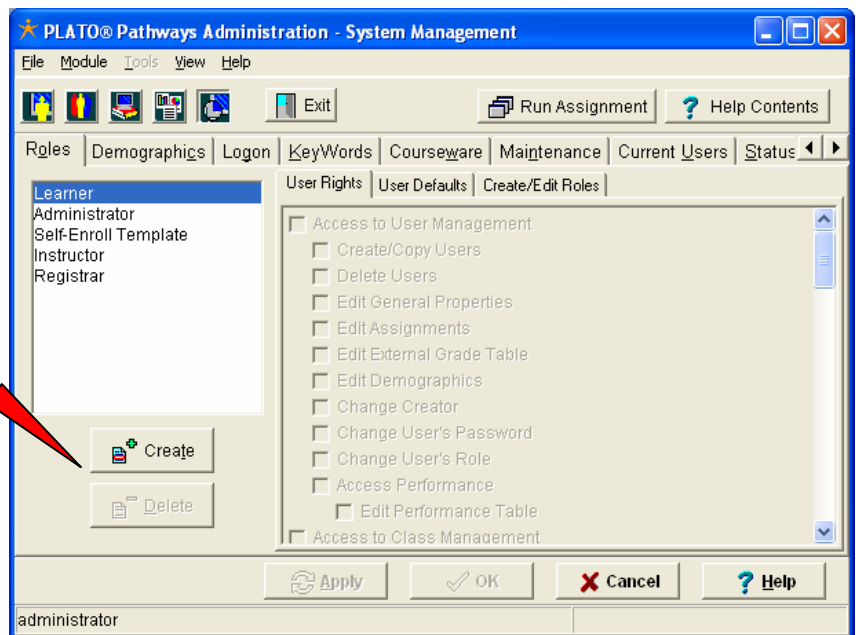


Step: # 2

Click on the System Management Button

Step: # 3

Click Create



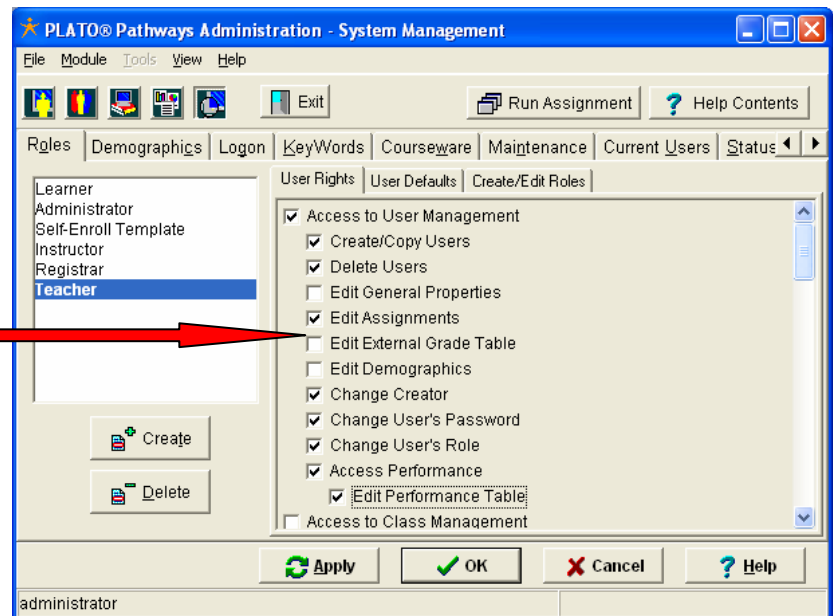
Step: # 4

Change the Role Name to Teacher



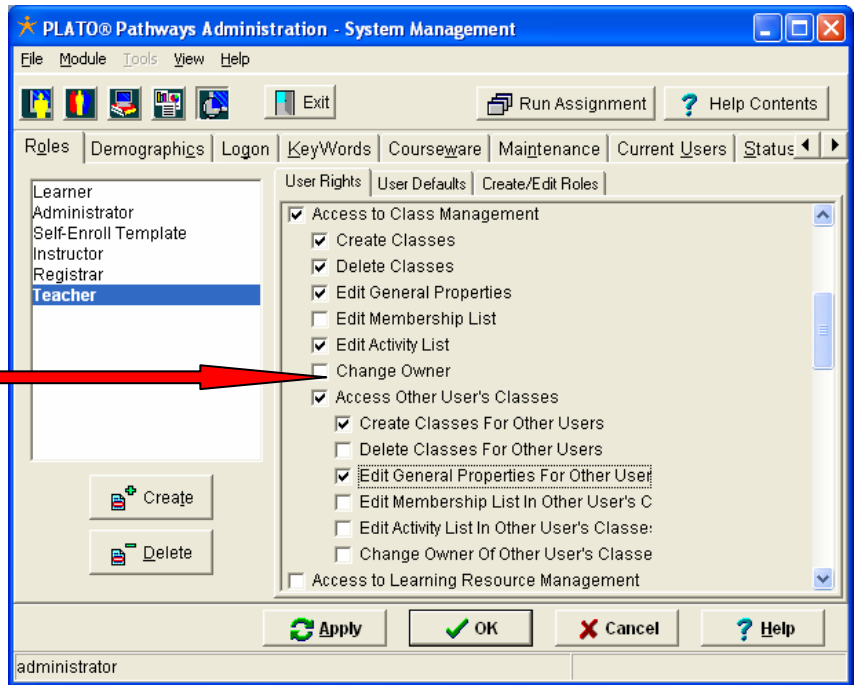
Step: # 5

Start with the Access to User Management and check these boxes.



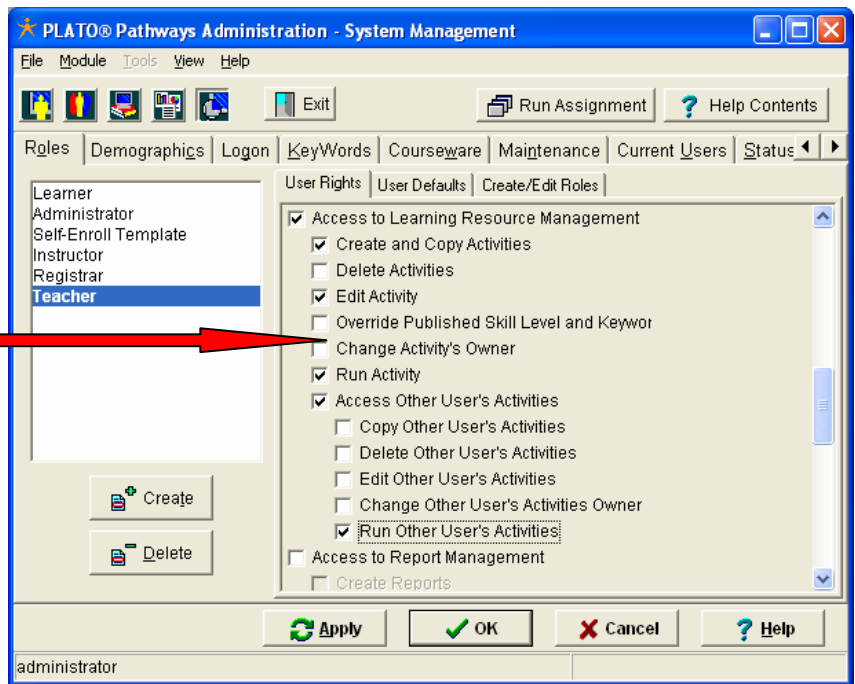
Step: # 6

Move to the Access to Class Management and check these boxes



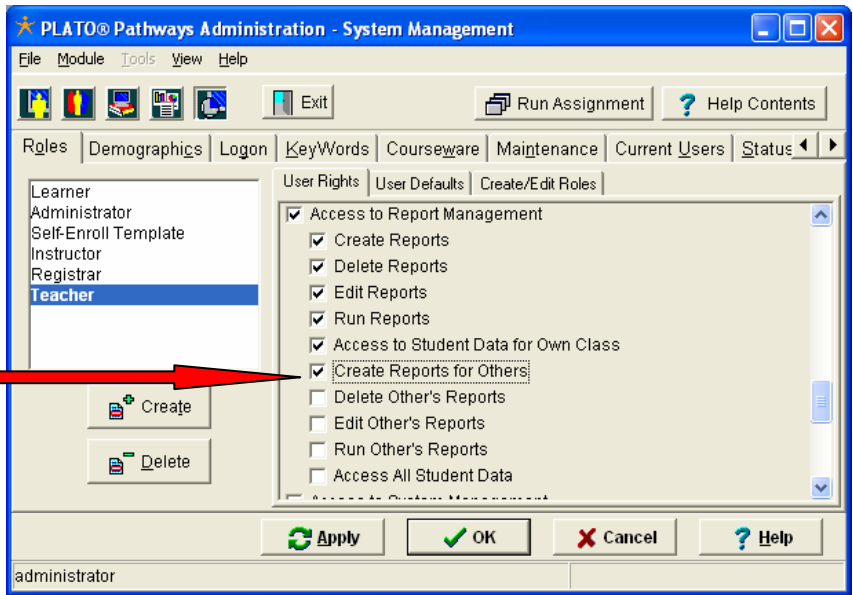
Step: # 7

Move to Access Learning Resource Management and check these boxes



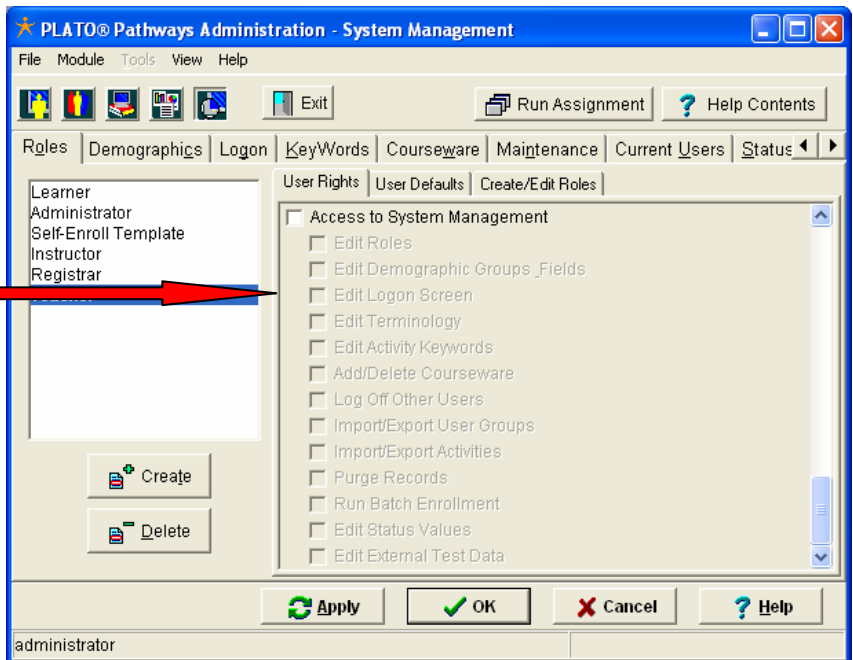
Step: # 8

Move on to Access to Report Management and check these boxes



Step: # 9

Move on to Access to System Management and DO NOT CHECK ANY OF THESE BOXES



Step: # 10

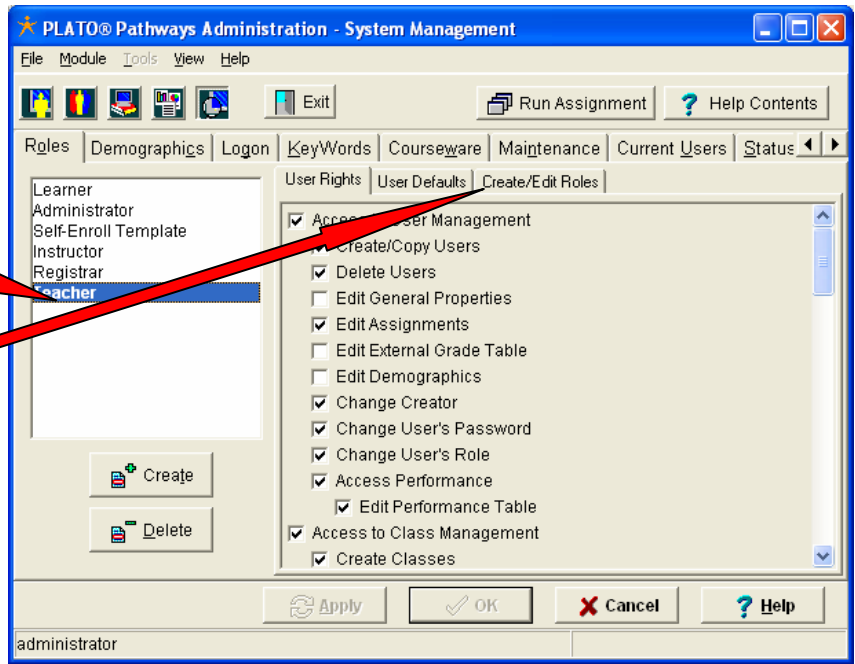
Click Okay

Step: # 11

Make sure the Teacher Title is High-lighted

Step: #12

Click on the Create/Edit Roles Tab

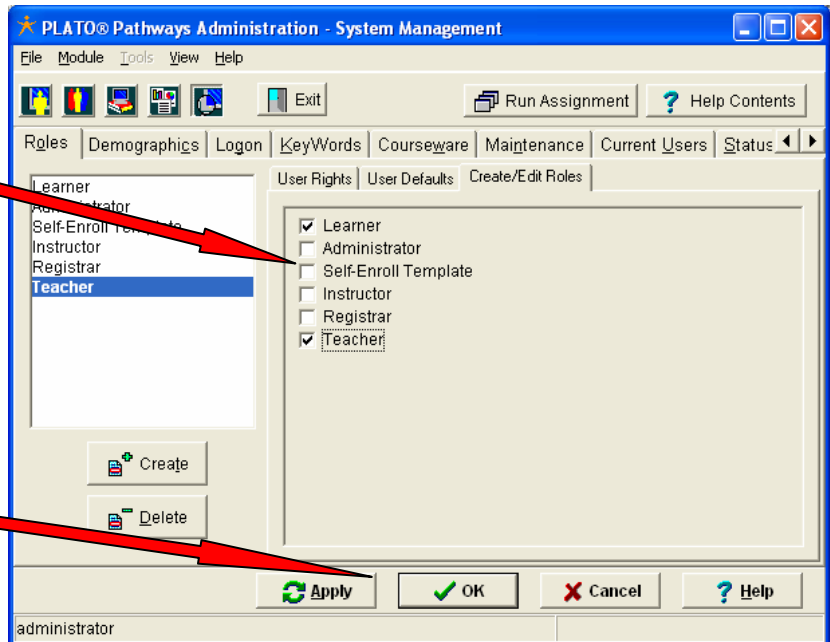


Step: #13

Check the following Boxes

Step: #14

Click OK



Note: You are now ready to assign this role to your Teachers.